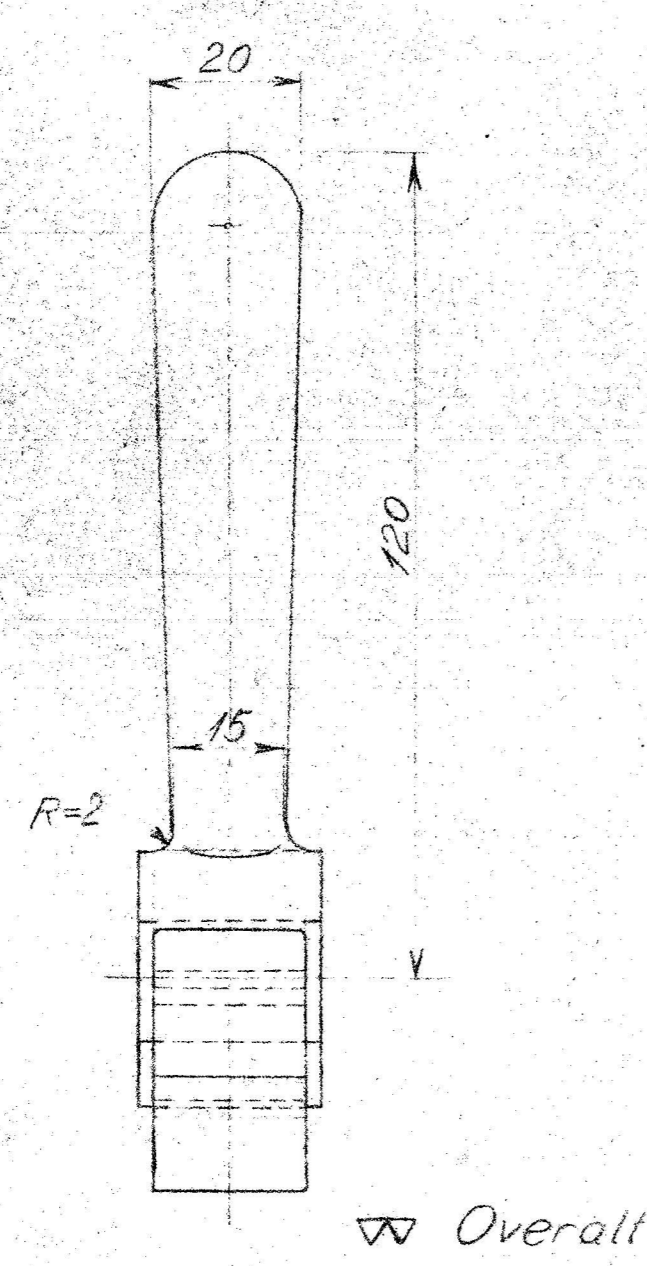
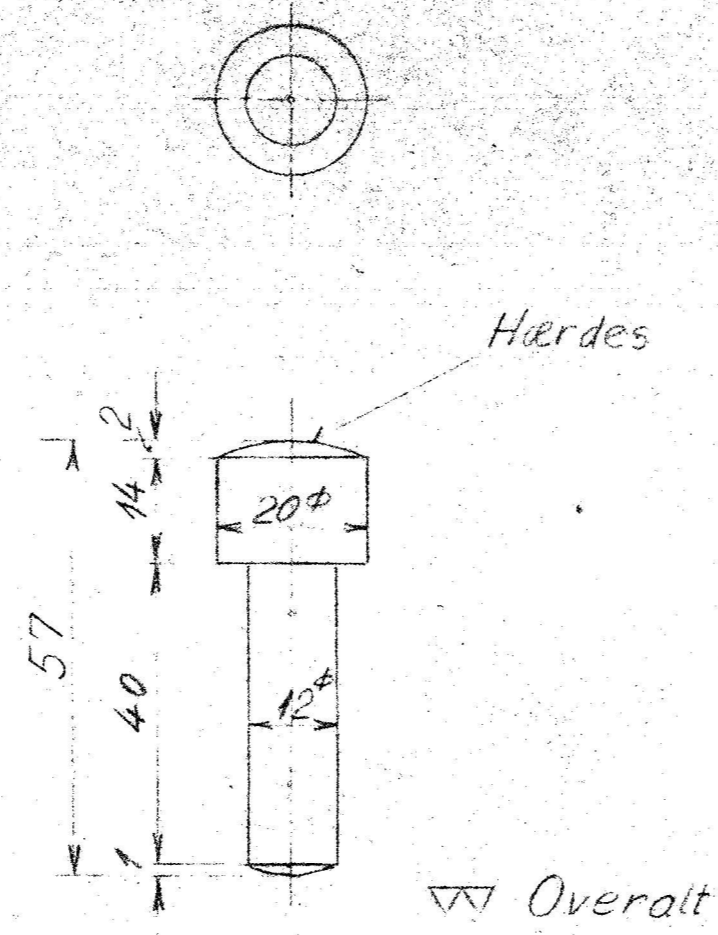


Tegn Pr 65 i	Pos 43	Pal i. Styring	1Stk	1:1
Rev.		Flussjern		

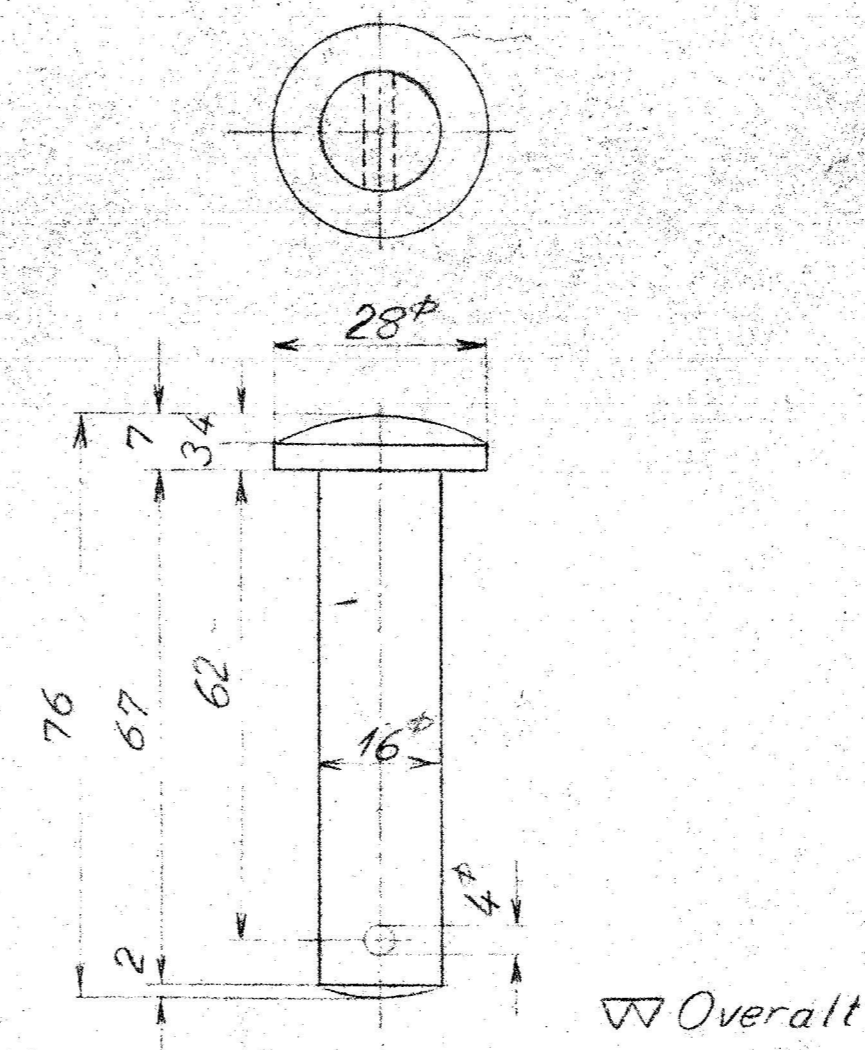


Overalt



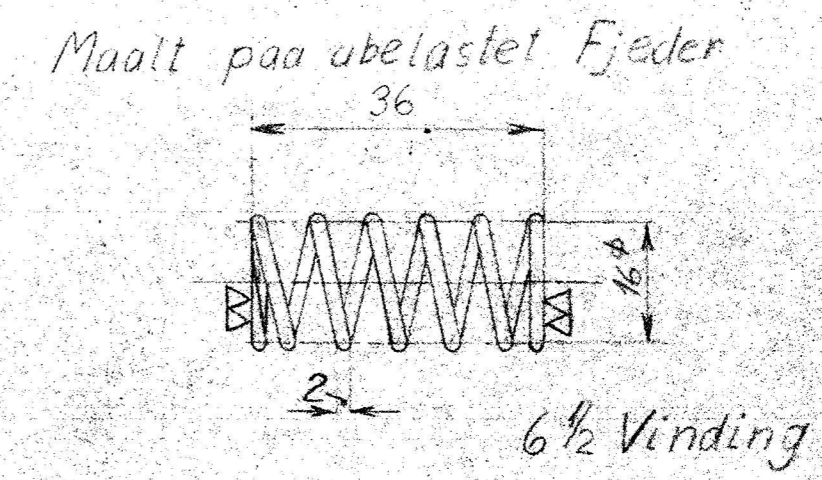
Overalt

Tegn Pr 65 i	Pos 44	Palltilholder	1Stk	1:1
Rev.		Kulstofstål 445%		

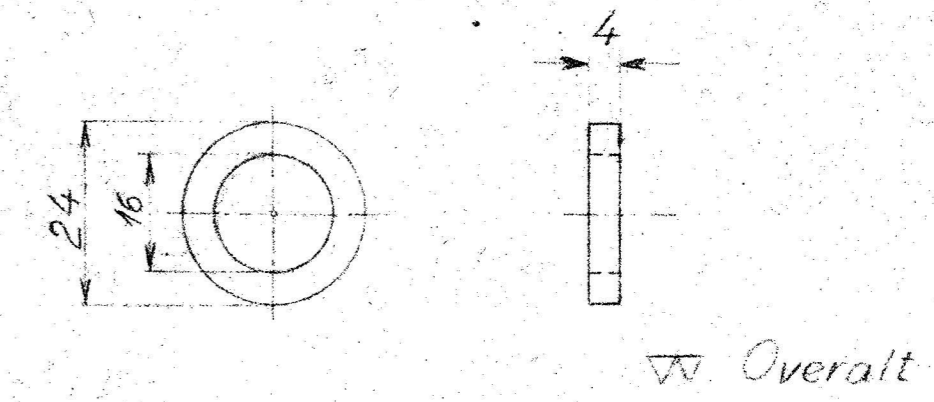


Overalt

Tegn Pr 65 i	Pos 45	Bolt for Pal	1Stk	1:1
Rev.		Flussjern		

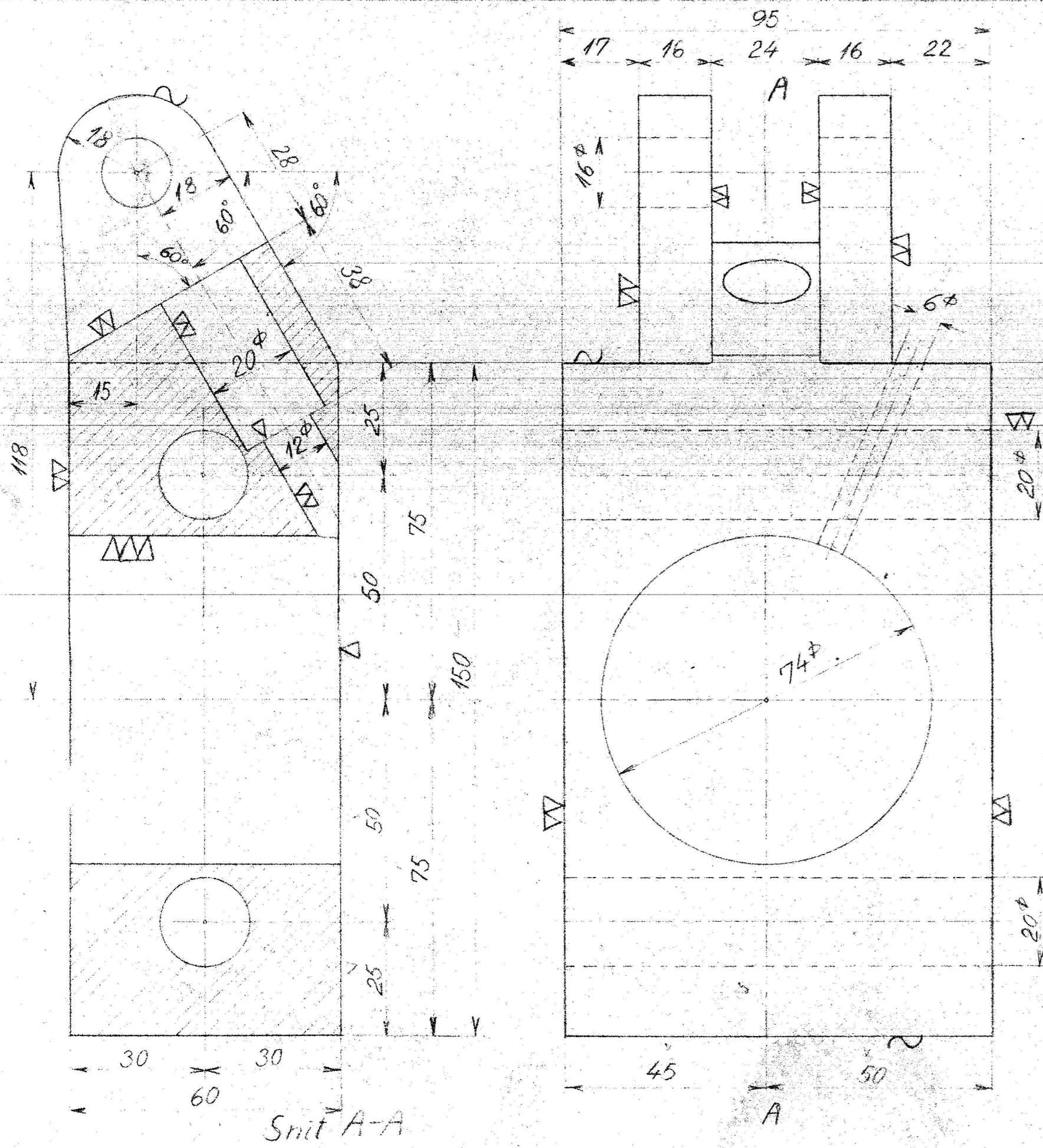


Tegn Pr 65 i	Pos 46	Fjeder for Pal	1Stk	1:1
Rev.		Fjederstaal		

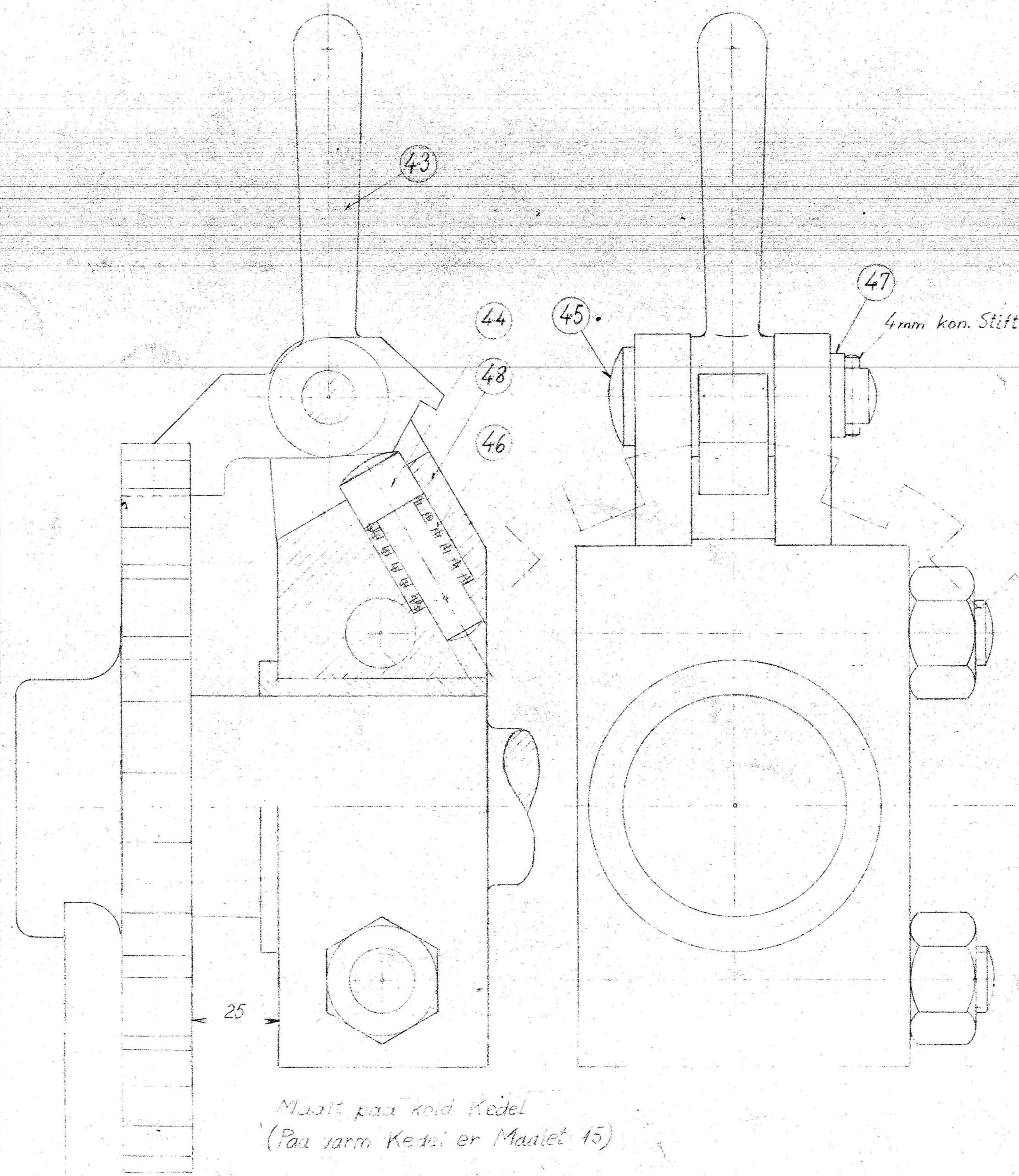


Overalt

Tegn Pr 65 i	Pos 47	Skive for Pal	1Stk	1:1
Rev.		Flussjern		



Snit A-A



Muult paa roed Kedel
(Paa varm Kedel er Maalet 15)

1	Bagste Leje for Styring	48	de
1	Skive for Pal	47	Flussjern
1	Fjeder for Pal	46	Fjederst.
1	Bolt for Pal	45	Flussjern
1	Palltilholder	44	Staal 445
1	Pal for Styring	43	Flussjern
Styktal	Genstand	Nr	Materiau

De danske Statsbaner.
Maskinafdelingen.

Maalest. Tegn. 241-45. 1:1
1:1

Palmekanismen til styring

PR. 65 i

11 AUG. 1944

Forendes sammen med Leje for Pal i Pos 40

Tegn Pr 65 i	Pos 48	Bagste Leje for Styring	1Stk	1:1
Rev.		Flussjern		

Tegn Pr 65 i	Pos 49	Leje for Styring	1Stk	1:1
Rev.		Flussjern		

Maschinenbau
Centralwerkstatt